

In the event of a robbery...



Stay calm at all times
Do not try to resist

Do not try to chase
after the robbers



Report to
the police
when safe



Observe the
characteristics of
the robbers



Remember
escape route of
the robbers

**Do not hesitate to call police
if suspicious person is found**

Please scan the QR Code for more details

Report Rooms



SafeCity.HK



Preventive Measures



Enhance
security systems



Install glass
break detectors



Install laminated
showcase windows



Install heavy-duty locks
mounted to the ground



Employ security guards
to escort valuables



Be alert of suspicious
persons or vehicles



Use safes for
storage



Outside operating hours,
place valuable items
in secured location

Security Tips for Goldsmith, Watch and Jewellery Shops

Modus Operandi

Theft

Diverting attention, taking opportunity to steal...



Robbery

Smashing of showcase windows, threatening staff...



Burglary

Damaging gates, intruder alarm systems...

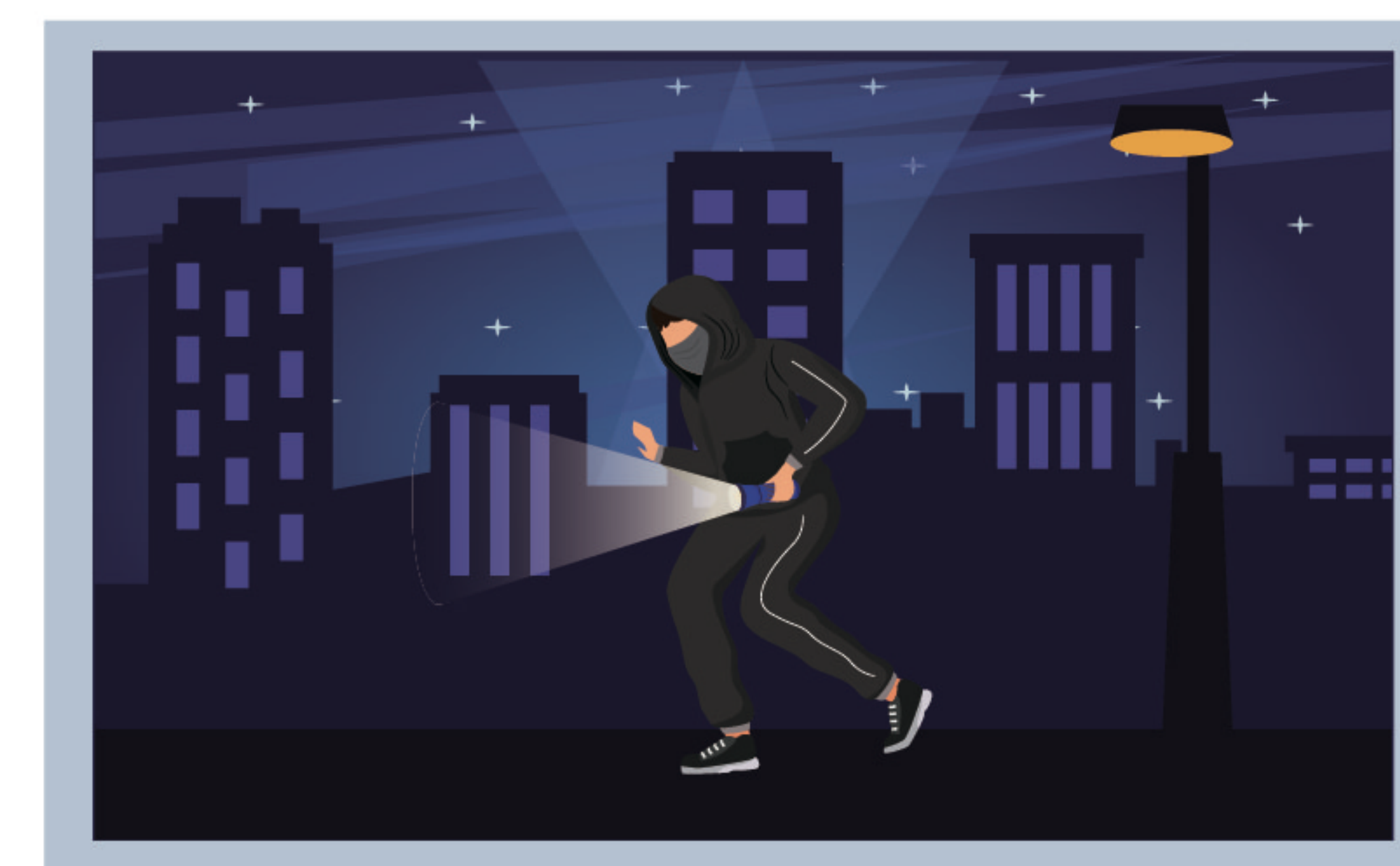


Goldsmith, watch and jewellery shops are tempting targets of theft because of presence of expensive goods that are easy to carry around.

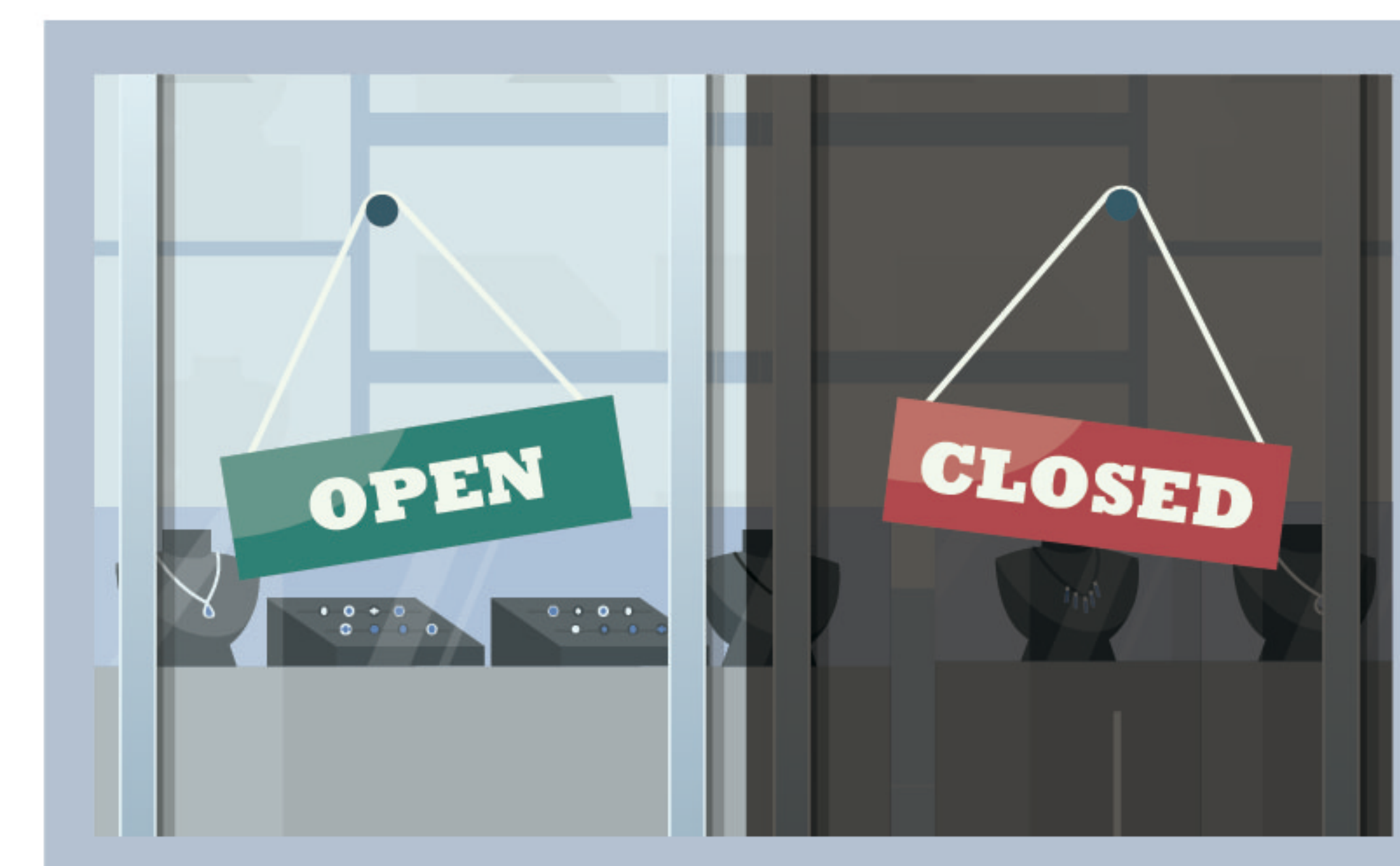
Times when crimes are most likely to occur



Insufficient shopkeepers / Too many customers



In the quiet of night



During opening and closing of shops